

USER - EXPLOITATION



How to Play 2 Truths and a Lie

Two Truths and a Lie is a get-to-know-you type of icebreaker game. Players tell two truths and one lie about themselves (in any order). The object of the game is for everyone else to determine which statement is actually the false one.

This game is a get-to-know-you icebreaker game. Recommended group size is small, medium, or large. Works best with 6-10 people. Any indoor setting will work. No special materials are needed, although pencil and paper are optional. For all ages



By the end of the session participants will:

Have an understanding of what Child Sexual Exploitation is.

Have an understanding of what Child Criminal Exploitation is.

Know the signs of risk of Exploitation

Know where to turn to for support



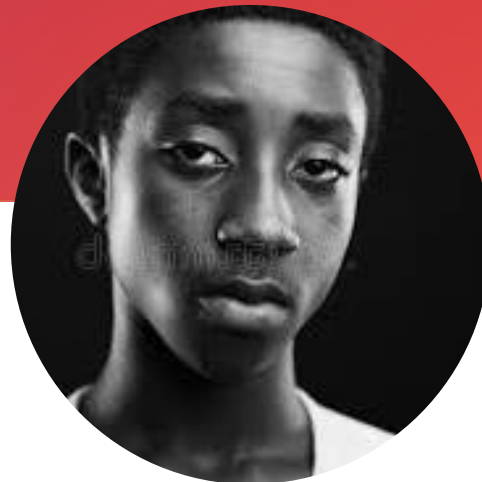
BEFORE WE START

The discussions today may be very sensitive, and videos may cause upset, please remember we are here to help and support NOT point the finger.

We must acknowledge that people find it difficult to discuss family/personal issues and anything discussed today should remain confidential and not discussed out of this arena unless reporting or asking for support.

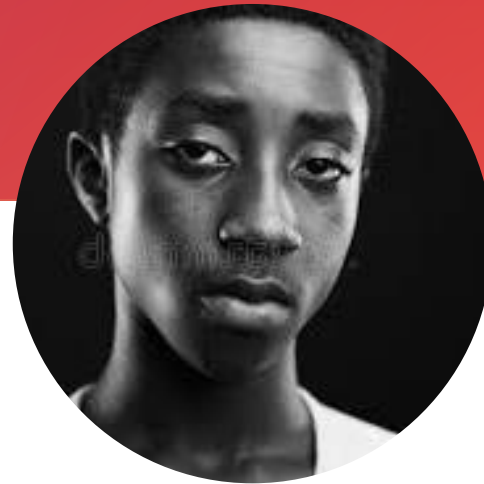
Being exploited is NEVER the young persons fault

BEFORE WE START



https://www.youtube.com/watch?v=-VX9J_VApTs

Victim - Perpetrator



DEFINITION

Child Sexual Exploitation

"Child Sexual Exploitation (CSE) is a form of child sexual abuse. It occurs where an individual or group takes advantage of an imbalance of power to coerce, manipulate or deceive a child or young person under the

age of 18 into sexual activity (a) in exchange for something the victim needs or wants, and/or (b) for the financial advantage or increased status of the perpetrator or facilitator. The victim may have been sexually exploited even if the sexual activity appears consensual. Child sexual exploitation does not always involve physical contact; it can also occur through the use of technology"

Child Criminal Exploitation:

"Child Criminal Exploitation (CCE) involves exploitative situations, contexts and relationships where a child receives 'something' (e.g. food, accommodation, drugs, alcohol, cigarettes, affection, gifts, money) as a result of them completing a criminal task on behalf of another individual or group of individuals.

Child Criminal Exploitation often occurs without the child's immediate recognition, with the child believing that they are in control of the situation. In all cases, those exploiting the child have power over them. Violence, threats, coercion and intimidation are common.

USED AND EXPLOITED

https://www.youtube.com/watch?v=pJ_RtekjNLw

WHAT ARE THE SIGNS

What type of exploitation is shown in the video?

What other types of exploitation are there?

Who is most vulnerable today?

CONSEQUENCE OF CCE INDICATORS

- ❑ Exploitation - Many young people are groomed and exploited to supply/store drugs as runners and mules.
- ❑ Glamorised and Normalised - Not every young person is initially groomed. Some young people are attracted to the idea of County Lines and willingly approach older drug dealers to recruit them. They see the glamour but later realise the realities and consequences:
 - ❑ No sleep
 - ❑ Poor Living Conditions
 - ❑ CSE/Health Risk - Trap house, harmful environment, used syringes, excrement and blood, many under 18's are used for sexual favours to pay off debts.
 - ❑ Prison
 - ❑ Criminal Record
 - ❑ Debt Bondage and Modern Day Slavery - Some set up their own runners
 - ❑ Rival Gangs/Drug Dealers
 - ❑ Family Targeted / Serious Injury

BEHAVIOR RISK INDICATORS CSE

- Missing episodes** and/or found out of the area
- Additional money, clothes, and accessories they are unable to account for
- Withdrawn and refused to discuss or share information
- Unexplained Injuries
- Travelling (alone) to seaside or market towns
- Excessive amount of calls text and phone calls
- Repeat STI's/pregnancy scares
- Mental health
- Significant change in behaviour or emotional wellbeing
- Self-harming
- Carrying weapons
- Relationships with controlling/older people individuals or groups
- Scared/Secretive
- Parental concerns - not reported as missing
- Unable to give details of where they have been
- Drug/alcohol misuse
- Not attending school
- Disclosures made and then withdrawn

WHERE TO SEEK SUPPORT

NSPCC www.nspcc.org.uk or **Tel: 0808 800 5000**

Barnardo's www.barnardos.org.uk

Childline www.childline.org.uk or **Tel: 0800 11 11**

Child exploitation and on-line protection center (CEOP)
www.ceop.police.uk

NWG network www.nwgnetwork.org

Missing Children helpline: www.missingpeople.org.uk

www.fearless.org

www.thinkuknow.co.uk

www.fearless.org